



KINGTEC

CONSTRUCTION MACHINERY AIR-CONDITONER



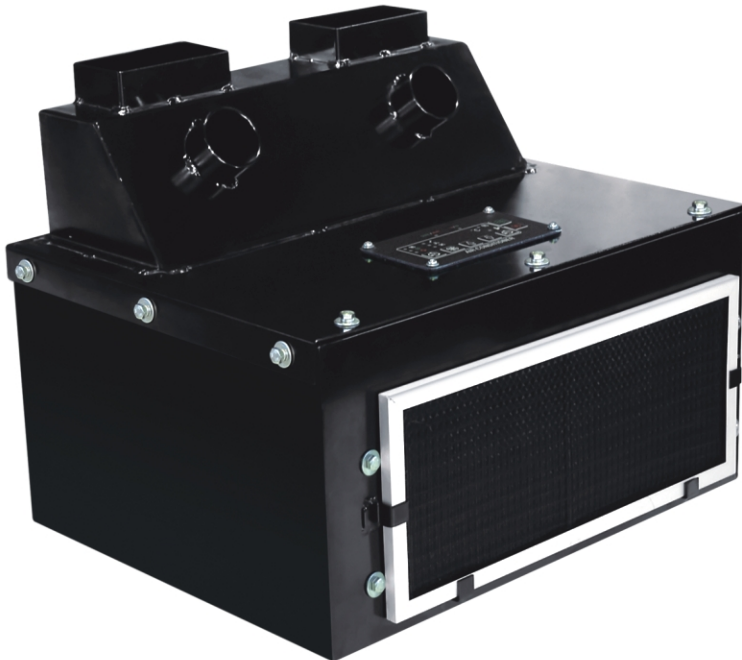
Floor Type

Cool & Heat Air-conditioning Unit

KT026NR

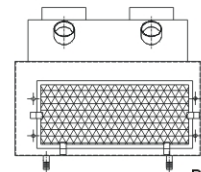
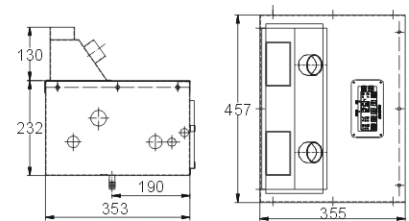
**Application: Architecture,
Mining, Agriculture And So On.**

Floor mounted design, compact structure, supplies cool air flow directly or for air duct application.



Different Applications Require The Use Of Appropriate

Cooling Capacity	33000 Btu/h
Heating Capacity	32000 Btu/h
Air Volume	800 m ³ /h
Current	DC24V/9A
	DC12V/18A
Weight	19Kg
Remark	Different applications use appropriate condenser & compressor



Dimensions: mm